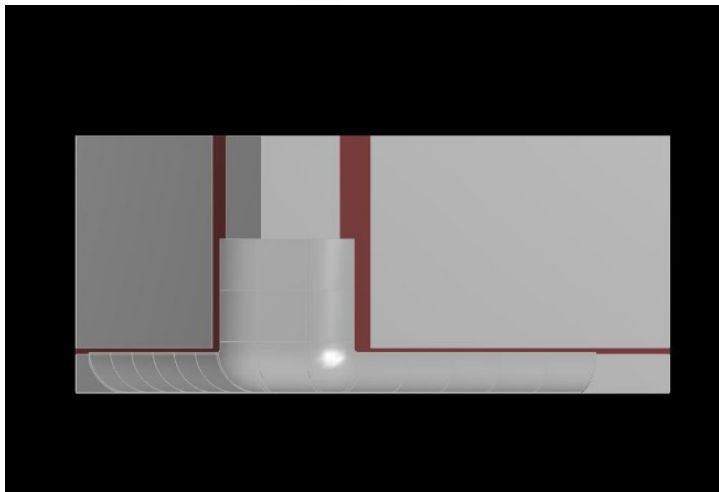




[Pro Matte Flooring](#) | [System 1.5 EZ](#) | [System 1.5 FS](#) | [System 3 EZ](#) | [System 4 BI](#) | [System 4 FS](#) | [System 4 QS](#) | [System 5](#) | [System Super3EZ](#) | [Tabletop MiniCyc](#) |

System Super3EZ



3'6" Radius Built-In System With 45° Corner Design Features*

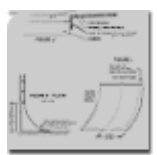
Our System **Super3EZ** provides an additional degree of configuration to a cyclorama. This system is the choice for the "true professional." A diagonal performance corner can be created by placing any number of cove modules between the 45° degree corners. With a 3'6" vertical radius and a 5' horizontal radius, lighting the corner is easy and allows users to shoot multiple angles. This non-parabolic corner reduces noise reflection so common with symmetrical (90° degree corner) cycloramas. For this reason, System **Super3EZ** is an excellent choice for video, post production, and virtual set technology.

This built-in version of our state-of-the-art cyclorama system has no height restrictions and can be used in large or small studios for any application.

Modules arrive drilled and trimmed. Joints are finished with conventional user-supplied dry wall construction.

***Pro Cyc Certified Installation is available for this system**

Download Schematics for System Super3EZ:



- [Schematics PDF 1](#)
- [PDF 2 with an expanded corner](#)
- [PDF 3](#)
- [PDF 4](#)

Download Installation Instructions



- [Installation Instructions for System Super3EZ](#)
- [Helpful Construction Hints](#)

3D view

Specifications:

- Corner Module: 45 degree with a 3'6" Cove radius & 5' Corner Radius
- Cove Modules: 3'6" radius x 4' wide
- Material: Hi-Impact ABS Plastic
- **For a full built-in installation, or it can be part of a Built-in and Freestanding combination for L & U shaped cycs where there is only one or two built-in walls available (combination with our [System 4FS](#))**

[Click here to launch 3D view of System Super3EZ](#)

Don't forget our patented Pro Matte flooring.
It will make your system complete!

Clients who use System Super3EZ:

- [Alpha Video & Audio](#)
- [AV Plus Design](#)
- [Bossier Parish Community College](#)
- [Bulldog Production Service, Inc.](#)
- [New York University \(NYU\)](#)
- [Discovery Channel, MD](#)
- [Discovery World](#)
- [Nissan USA](#)
- [Hogan Construction Group](#)
- [KPTV](#)
- [Mercedes Benz USA](#)
- [Geyer Springs First Baptist Church](#)
- [Renegade Productions](#)
- [Sound Matrix Studios](#)
- [TakeTwo.com](#)
- [Art Institute of Portland](#)
- [Three Angels Broadcasting Network](#)
- [VirtualSets.com](#)
- [WGNT TV-27](#)

Best Uses for System Super3EZ:

- A very effective and affordable solution for television and film studios
- **Perfect for news and sports desk** sets with 1-6 people
- Often used for Post Production
Cove Modules: 3'6" radius x 4' wide
- As a photography studio for small to medium sized products (e.g. small cars, motorcycles, etc...)
- Any application where studio design and/or sound is of high importance
- Ideal for virtual set backgrounds and HD TV Studios

Typical Users:

- News agencies and Cable TV studios
- Home shopping channels
- Government agencies
- Colleges, universities, and art/technical schools
- Studios utilizing virtual reality technology

PHOTOS

click a photo to enlarge it.

